



model

Management Of Domains
related to Energy in Local authorities

**MODEL: A strategic way
towards local energy efficiency...
and a good tool for cities to step
into the Covenant of Mayors**

***“Two countries,
one energy efficiency”
workshop***

Niepolomice (PL) – 18.06.2010

Christophe Fréring, Energie-Cités

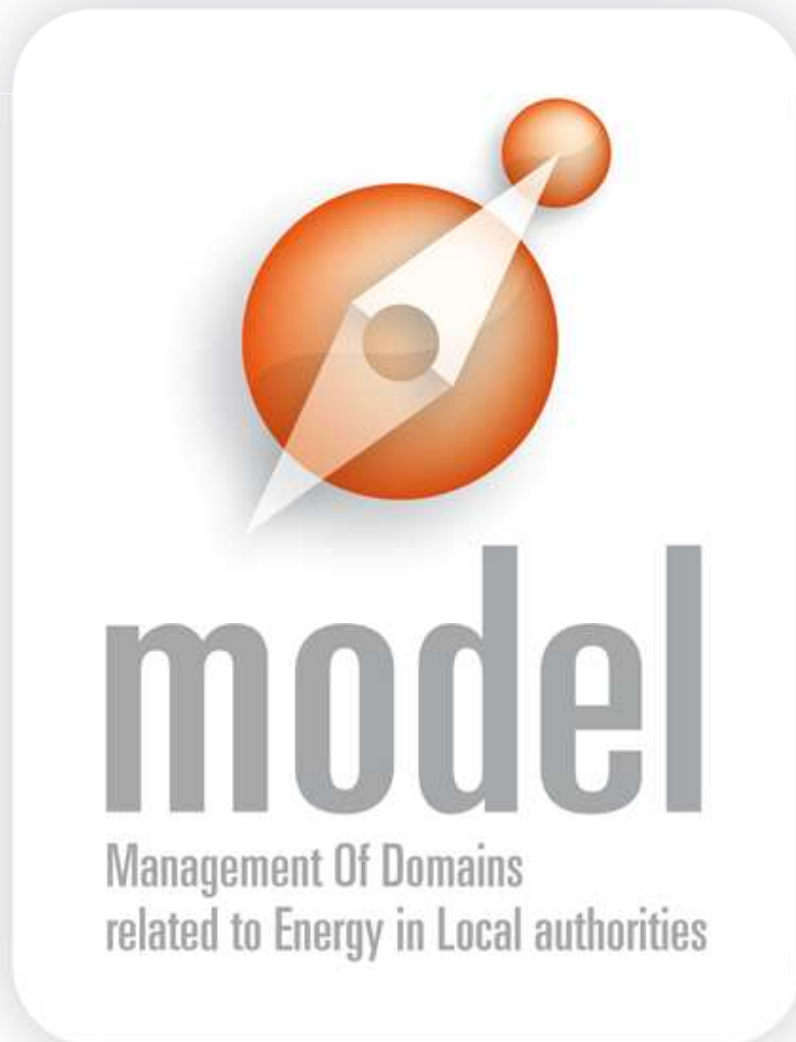


SUMMARY

- 1. Introduction**
- 2. How can **MODEL** contribute to a local authority's strategy?**
- 3. How can **MODEL** help meeting the Covenant of Mayors requirements?**
- 4. Conclusion**



How to make municipalities become MODELS for their citizens and local stakeholders?



- ✓ **IEE Project (Sept. 07 – April 10)**
- ✓ **10 Partners from 8 CEE countries**
- ✓ **42 Pilot Cities involved**

- ✓ **CIUDAD Project (April 10 – Sept. 12)**
- ✓ **4 National Partners in Ukraine, Moldova, Armenia and Georgia**
- ✓ **6 Pilot Cities to be involved**
- ✓ **Total budget = 637 000 €**
- ✓ **EU support = 80%**



On 29th January 2008, during the EU Sustainable Energy Week, **MODEL** has been recognized as the most promising project...



... and this special award has been handed over by the EU Energy Commissioner, Mr. Andris Piebalgs, to the MODEL partners.



2. How can **MODEL** contribute to a local authority's strategy?



What is this “European project” so called “MODEL”?

**A source
of money?**



A contract?



**With a
beginning...**

...an end...

...and that's it!

A potential source of bureaucratic problems?



I AM A VICTIM OF
MY OWN ADMINISTRATION

A travel agency?



A scenic mountain valley with a dirt road and a stream. The foreground shows a wide, unpaved dirt road curving through a lush green meadow. A small, rocky stream flows alongside the road. In the background, dense evergreen forests cover the lower slopes of the mountains, leading up to rugged, rocky peaks with patches of snow or light-colored rock. The sky is clear and bright.

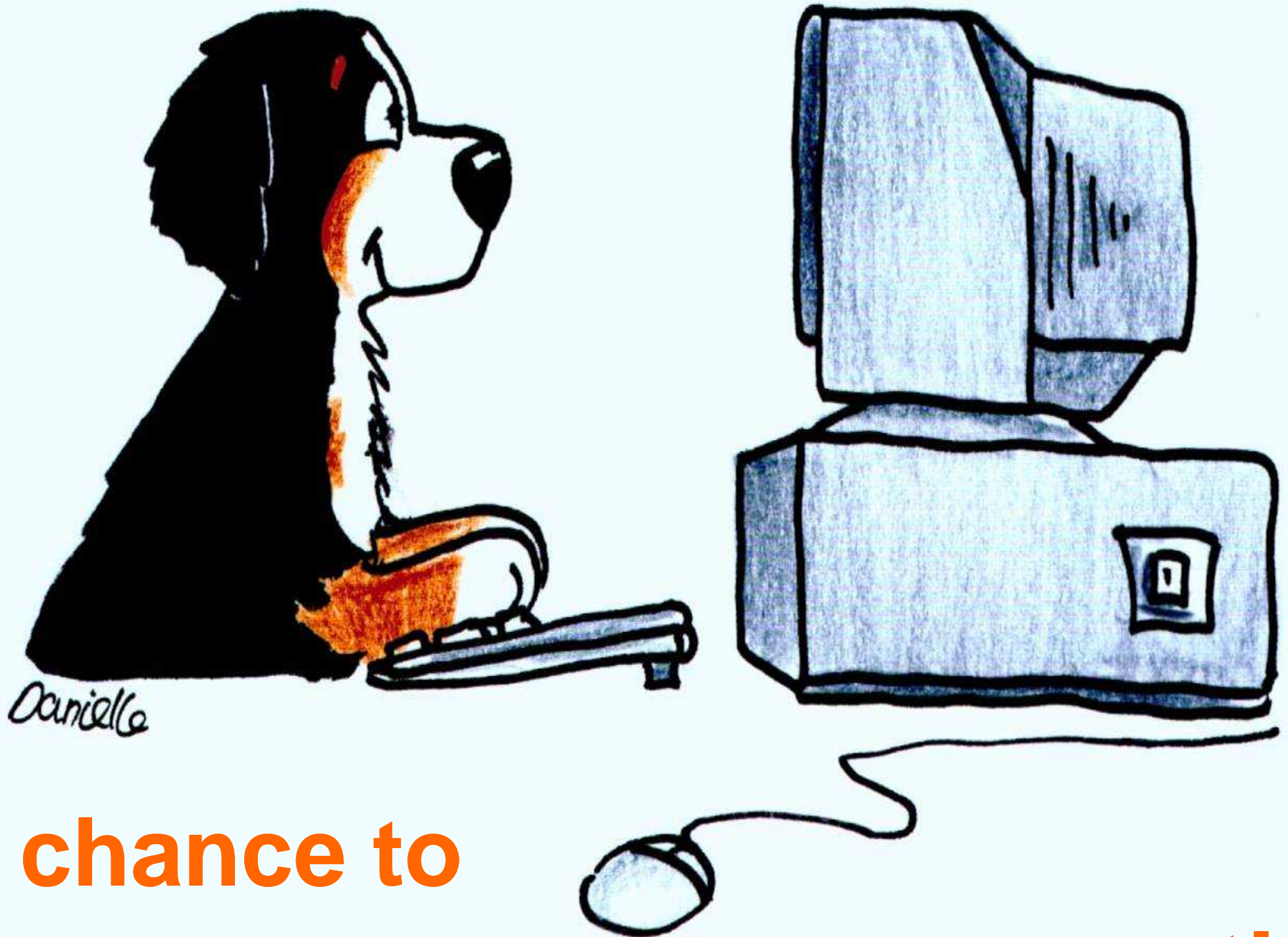
**...or a way to go
somewhere?**

But... where?

A chance for local authorities... to take the lead!

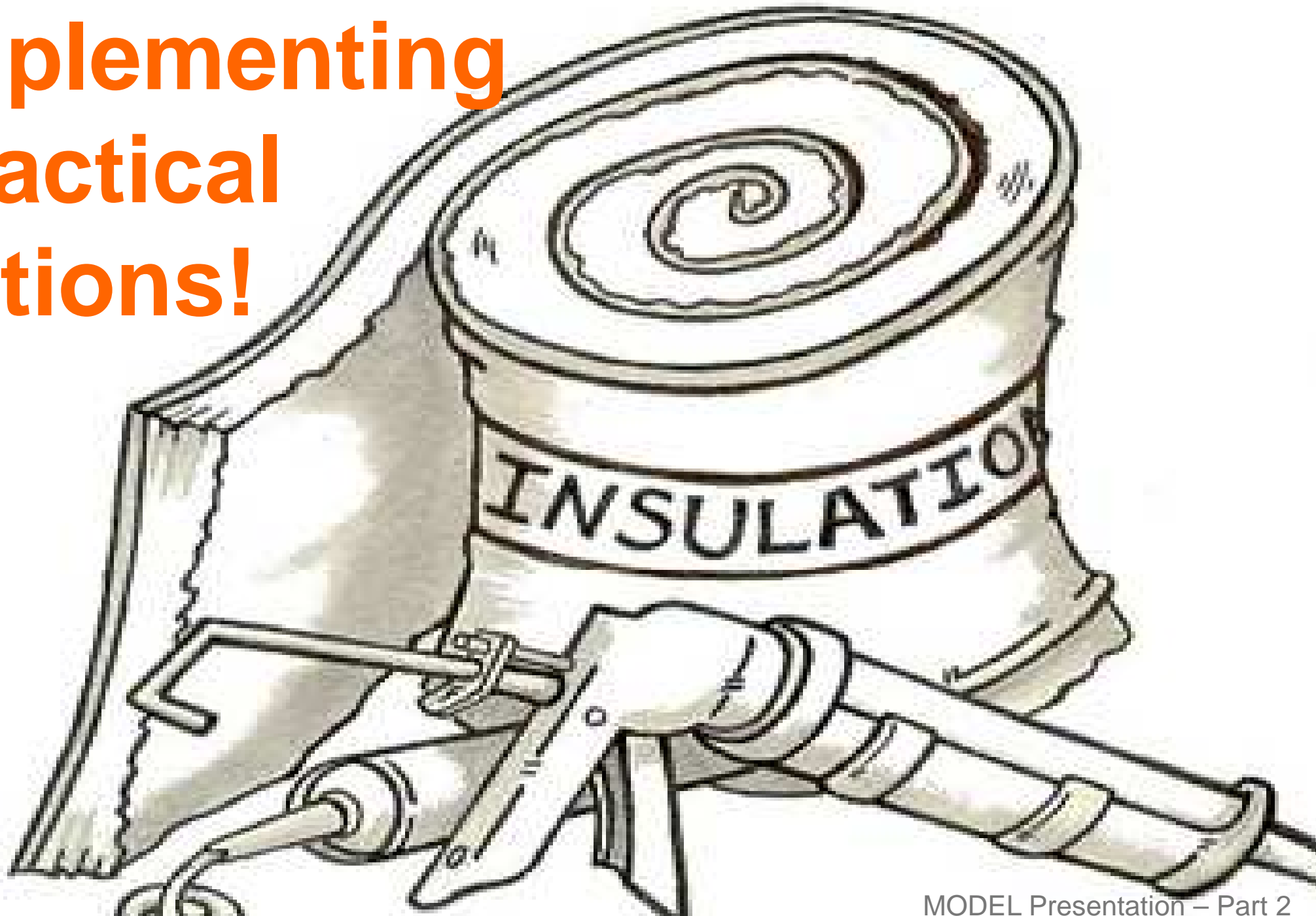


***Agenda:
Municipal Energy Action Plan***



**A chance to
improve energy management!**

**A chance for
implementing
practical
actions!**





A chance to involve citizens!

A chance to strengthen local networking activities!





A chance to achieve EU goals?

By 2020:

- ✓ GHG emission : - 20%
- ✓ Energy intensity : - 20%
- ✓ Renewables: 20% of energy supply

3. How can *MODEL* help meeting the Covenant of Mayors requirements?



**Covenant
of Mayors**

Committed to urban
sustainable energy

Make your city a **model**...



... with the
MODEL
project!



Save your city's money, increase the quality of life!

Clever
public
transport

Aware and
responsible
citizens

Efficient water
consumption



Local
renewable
energy
production

Energy -
efficient
buildings

Safe and
cheaper
public lighting

So many **opportunities...**



Investments in energy efficiency and renewable energy resources will be rewarded



Efficient public lighting
=
lower energy bills +
increased security

Low-energy residential houses
=
more comfort + lower energy bills...



Investments in energy efficiency and renewable energy resources will be rewarded



Public transport
=
clean air + comfort + less traffic jams
+ less car accidents...



Solar thermal & PV installations
=
less emissions + lower energy bills...



MODEL...

- ✓ is **designed for local authorities** from the ENPI area, based on past experience in the EU
- ✓ is a chance to:
 - ~ share experience
 - ~ build or improve a local energy strategy
 - ~ improve local energy management
 - ~ take practical actions
 - ~ **become MODELS for citizens and local stakeholders**



LOCAL GOVERNMENT IS EVERYWHERE!

PUBLIC
LIBRARIES

WATER
SUPPLY

SPORTS
PARKS

SEWAGE

PAVEMENT
& ROADS

RECYCLING
& RUBBISH

SWIMMING
POOLS

PUBLIC
TRANSPORT

ANIMAL
CONTROL



Main issues for MODEL

MODEL aims at turning at least 6 pilot cities into **“models” for their citizens**, and thus at promoting the following actions:

- ✓ Hiring and/or training municipal **energy managers / officers**
- ✓ Implementing **multi-annual action plans** to improve energy performances of municipal properties and policies
- ✓ Selecting, testing and adapting **practical tools and methods** to improve local capacities including financial ones
- ✓ Making **concrete investments** for refurbishment of public buildings and sharing the lessons learnt at this occasion
- ✓ Taking **communication initiatives** towards civil society



Three levels for action

MODEL will act at 3 different levels:

- ✓ **ENPI/European** (Energy Cities and MODEL national partners) for exchange of experience, European added value, common training and events, coordination, etc.
- ✓ **National** (MODEL national partners) for training, exchange of experience, promotion, information, assistance to local authorities of each country, etc.
- ✓ **Local** (municipalities) for political decisions, practical implementation and communication with citizens by Pilot Cities... + hopefully many other local authorities in the EU neighbouring countries



A strong support for Pilot Cities

MODEL partners will:

- ✓ Adapt the **MODEL common methodology** to their specific needs and thus work on a similar basis and collectively create basic common tools
- ✓ **Exchange experience** on how to best implement the MODEL concept and activities
- ✓ Develop **communication tools** to support the pilot cities enhance awareness and involve the civil society
- ✓ Help 2 of the pilot cities to **refurbish one public building** and thus organise actions to build up local capacities of the 6 pilot cities as well as **disseminate their know-how** to fellow local authorities



A full set of impacts (I)

At individual level, MODEL pilot cities will:

- ✓ Involve the **top decision level** (politicians and management)
- ✓ Make the top decision makers aware that appointing real **Energy Managers or Units** is an imperious necessity
- ✓ Get capable to integrate the **energy management** as a normal municipal activity
- ✓ Improve their **internal organisation** and enhance the design and implementation of practical projects and strategies for the future

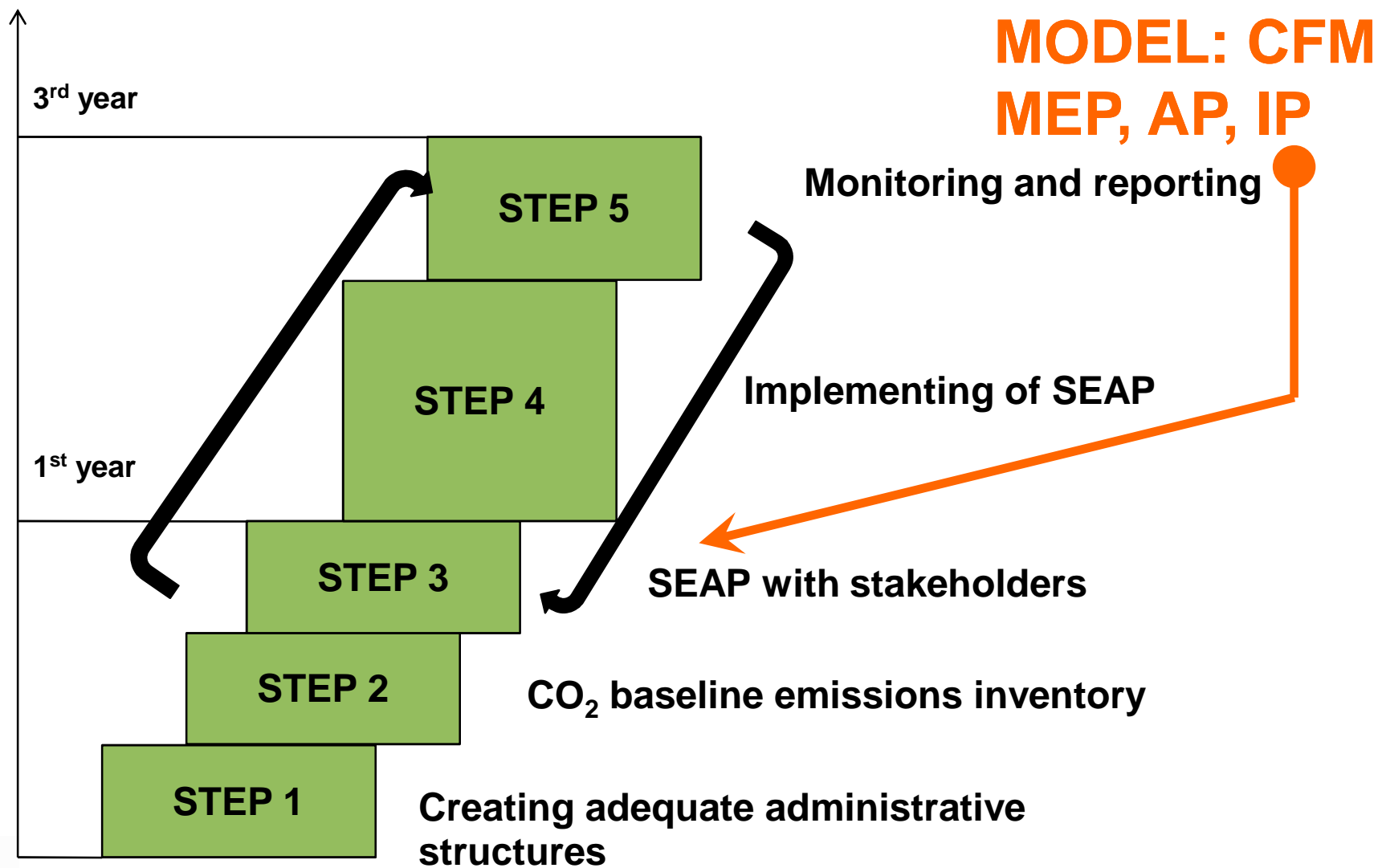


A full set of impacts (II)

- ✓ Develop and control **medium/long term strategies** and annual action plans with monitoring, information systems, investments, financing, display of energy performances...
- ✓ Become more aware of how to use the different **tools and methods** including financial means and schemes to transpose ideas into realities
- ✓ Organise “Municipal Intelligent Energy Days” to force the **participation of citizens** and to use their own capacities to change mentalities throughout their cities... and hopefully beyond!



● Commitments by the Covenant Signatories



4. Conclusion



Take advantage of MODEL!

- ✓ Use **methodological and communication tools** developed by MODEL:
 - ~ Common Framework Methodology with 10 instruction lists
 - ~ Review of financial schemes
 - ~ Shining examples
 - ~ Guidelines for campaigns towards the public
- ✓ ... and **improve your local energy management** in the most efficient way... to save thousands of euros that may be spent for other needful actions!
- ✓ ... thus becoming a **MODEL** city!



How to join MODEL...

The MODEL is implemented jointly in Ukraine, Moldova, Georgia and Armenia:

- ✓ Contractor: City of Lviv (www.city-adm.lviv.ua)
- ✓ Coordinator: Energy Cities (www.energy-cities.eu)
- ✓ National Partners
 - **Ukraine**: Energy Efficient Cities of Ukraine (www.enefcities.org.ua)
 - **Moldova**: Alliance for Energy Efficiency and Renewables (www.aeer.md)
 - **Georgia**: Energy Efficiency Centre Georgia (www.eecgeo.org)
 - **Armenia**: Energy Saving Foundation Armenia
- ✓ Supports: Knauf Insulation (www.knaufinsulation.com) & Danfoss (www.danfoss.com)
- ✓ Pilot Cities: Lviv, Kamyanets-Podilsky & Lutsk (UA)
Drochia (MD) Tbilisi (GE) Spitak (AM)



www.energymodel.eu



Thank you
for your attention!

www.energymodel.eu

